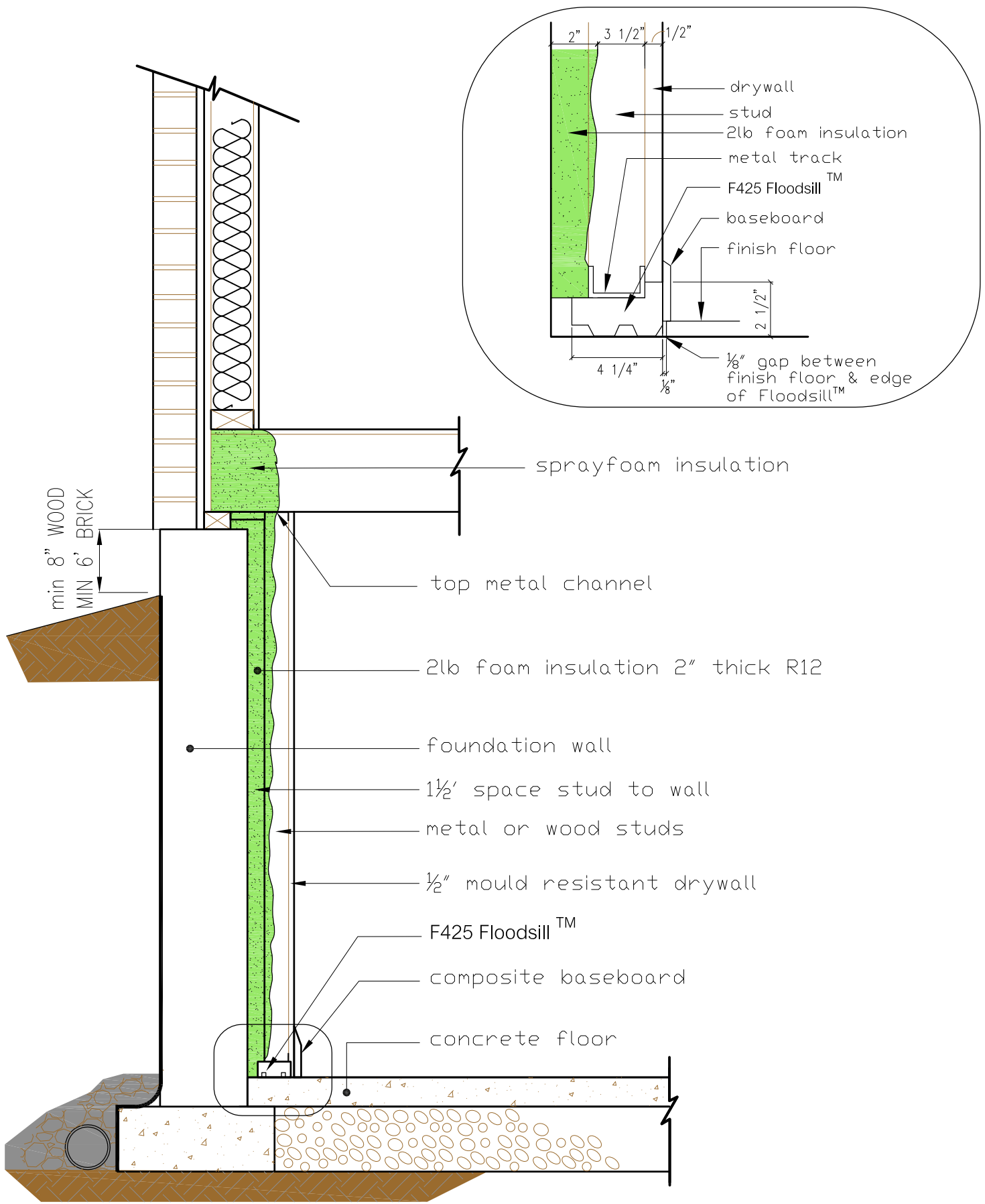


TYPE 4- SPRAY FOAM INSULATION (R12.6)



min 8" WOOD
MIN 6" BRICK

sprayfoam insulation

top metal channel

2lb foam insulation 2" thick R12

foundation wall

1 1/2' space stud to wall

metal or wood studs

1/2" mould resistant drywall

F425 Floodsill™

composite baseboard

concrete floor